

THE CORVETTE ESMERALDA (Chilean Navy vessel sunk in combat on 21 May 1879 at Iquique)

Characteristics:

Built at the Henry Pritchard's Shipyard, Northfleet, England. She was a corvette class ship placed in the slip on 13 December 1854 and launched on 18 September 1855. The Corvette Esmeralda joined the Chilean Navy on 18 September 1855 and was sunk in combat at the Iquique roadstead on 21 May 1879.

General Characteristics:

854 t displacement; length 64 m (without bowsprit); width 9.75 m; depth 5.49 m.
Propulsion: 2 horizontal condensation engines, 4 coal fired boilers, 1 screw; Power: 150 kW (200 HP) at 31 RPM; speed 8 knots (14,82 km/h). At the time of the combat she could only run at 2 knots.

Armament at the time of combat:

- 12 Armstrong forty pounder rifled muzzle loader (RML) guns.
- 4 Withworth forty pounder smooth bore muzzle loader (SML) guns.
- 2 Armstrong breach loader twelve pounder guns.



Recreations of the combat:

<http://www.youtube.com/watch?v=0w7uvZI5k-w>

http://www.youtube.com/watch?v=KRLzV3pCRrQ&feature=player_embedded

Underwater images:

http://www.youtube.com/watch?v=abXSf5p_G_g&feature=related

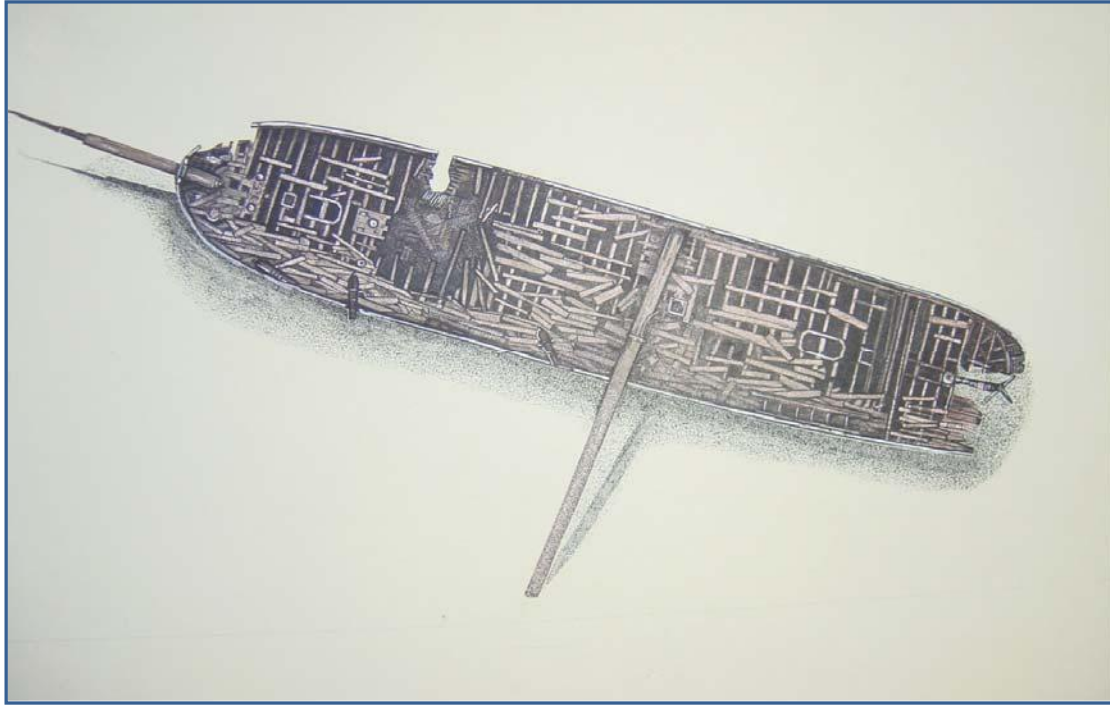
http://www.youtube.com/watch?v=rtOfBr-n_28

http://www.youtube.com/watch?v=eDxT_dY0dNE

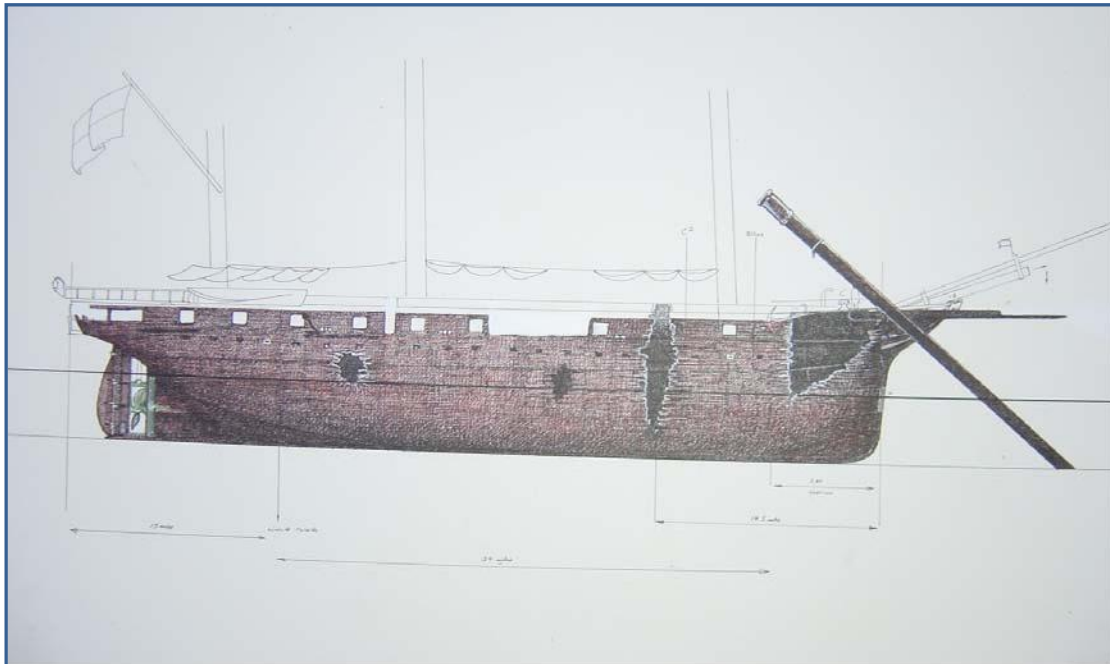
Some of the images presented are from a survey performed using SSS and are compared with file images of the Corvette Esmeralda: photographs of the original ship, underwater photographs (Iquique Naval Museum, D. Malfanti and F. Keyer) and drawings of the sunken ship surveyed and provided by Dr. Alfredo Cea (1977 expedition).

THE CORVETTE ESMERALDA UNDER WATER

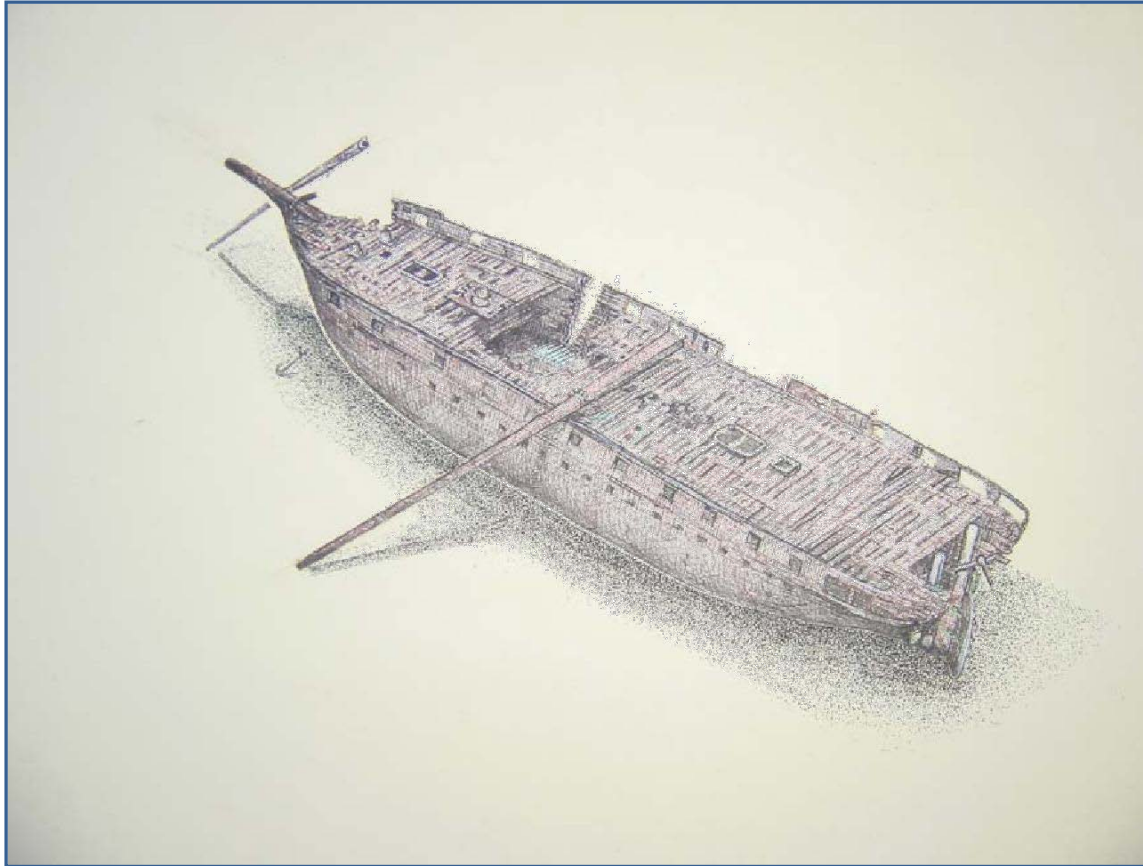
INFORMATION SURVEYED AND PROVIDED BY DR. ALFREDO CEA EGAÑA (1977 UNDERWATER EXPLORATIONS).



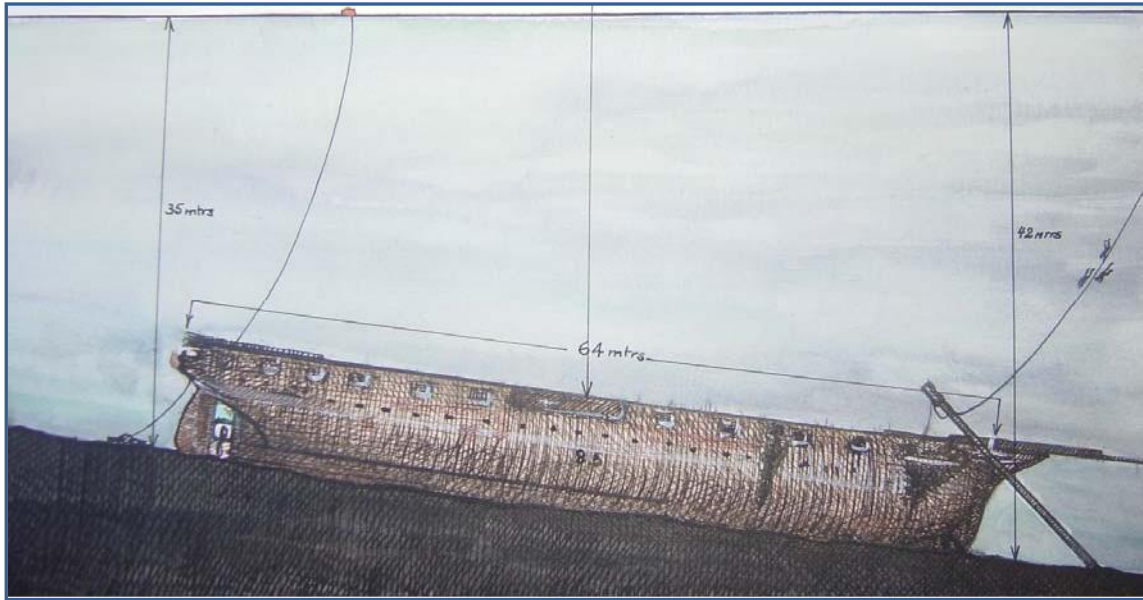
View from above (corrected drawing)



Starboard side view (uncorrected drawing)

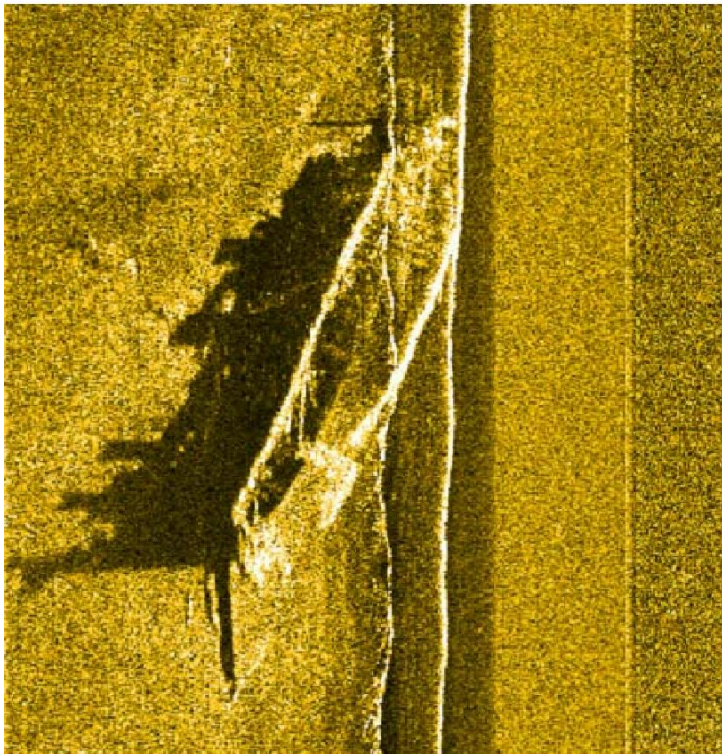
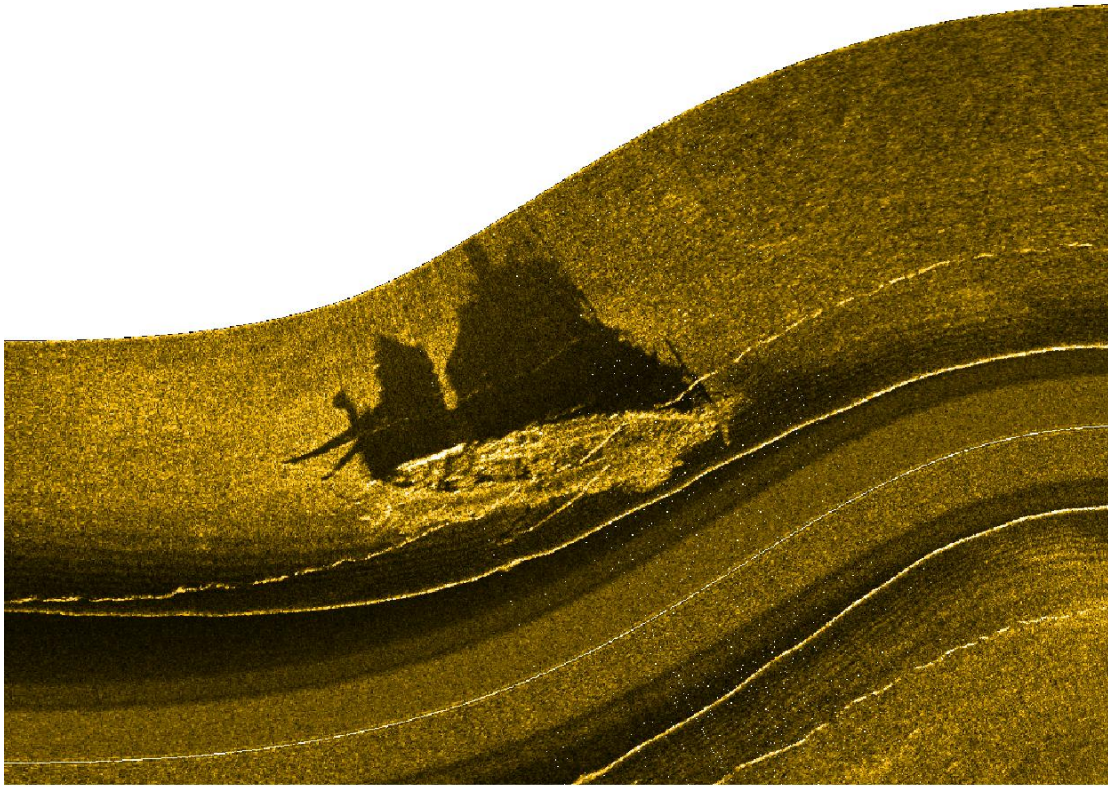


General View of the port side from above (uncorrected drawing)

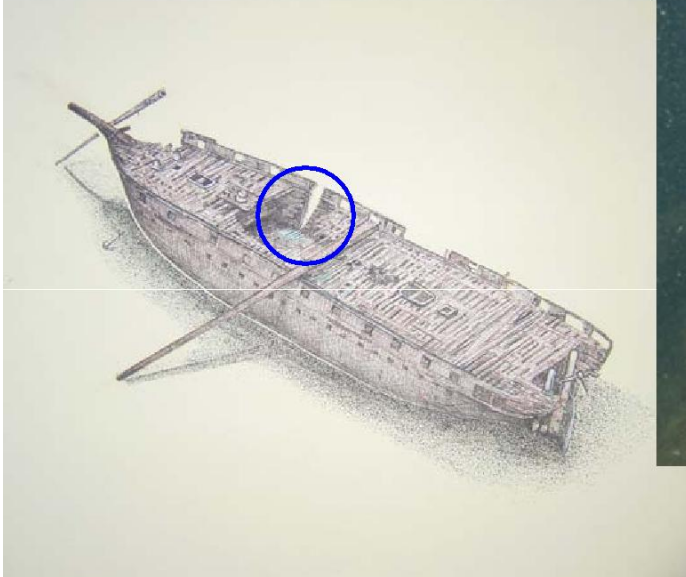
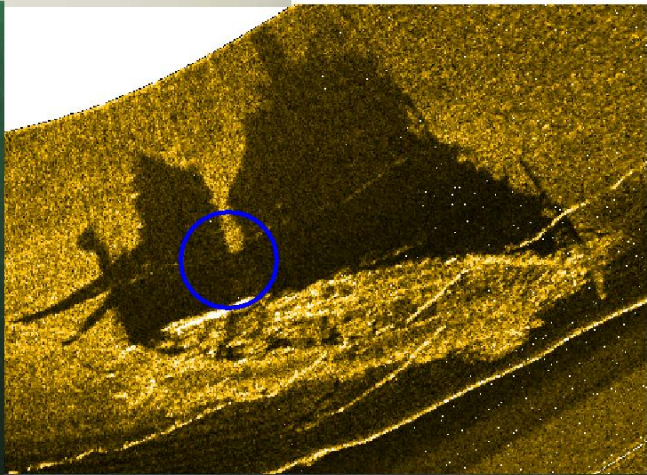
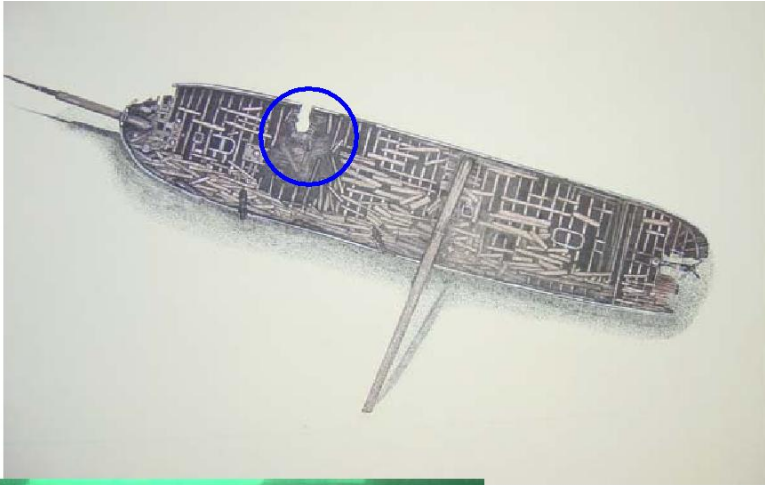


View of the starboard side (uncorrected drawing)

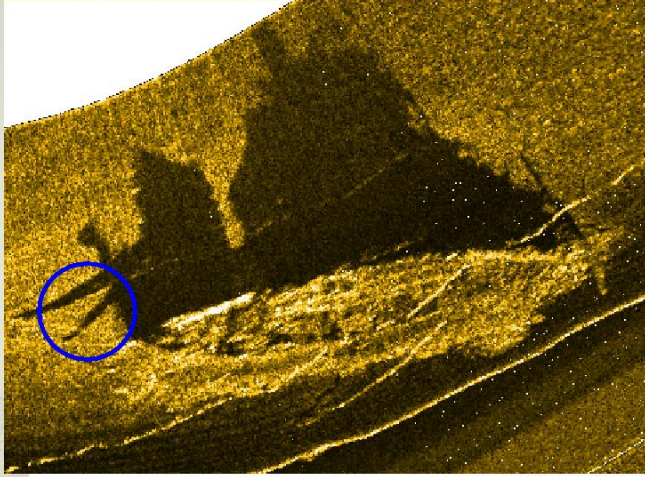
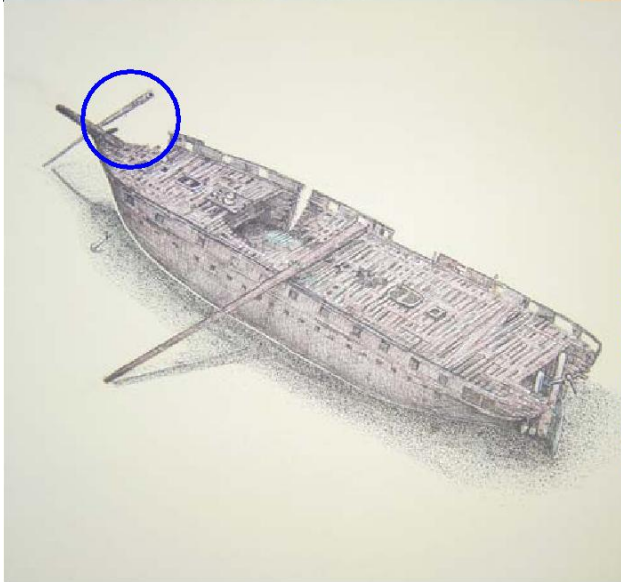
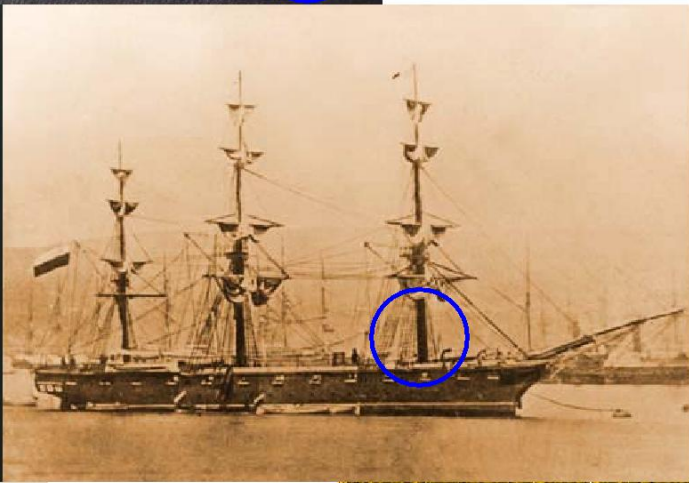
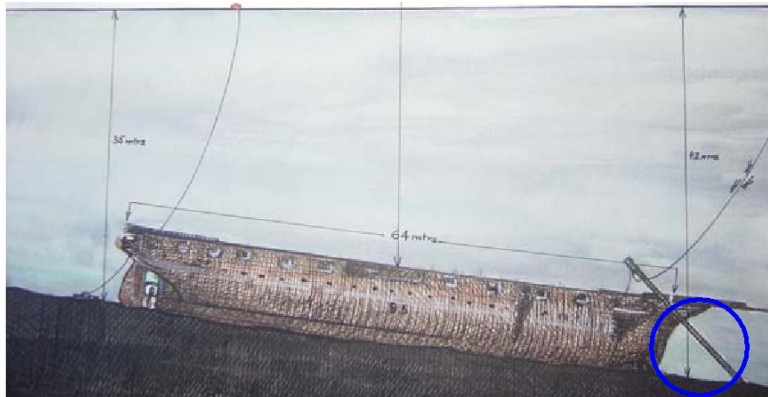
SIDE SCAN SONAR IMAGES



THIRD BEAK RAM



POSITION OF THE FOREMAST



POSITION OF THE MAIN MAST

